

RadiNET Pro

Your advantages

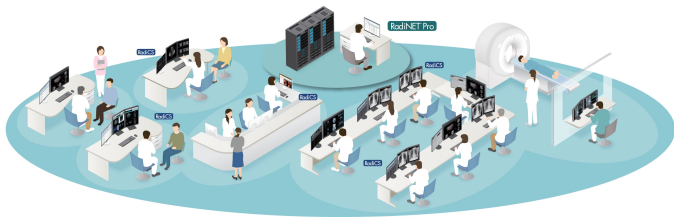
The RadiNET Pro software from EIZO enables the centralised and hence efficient quality management of all hospital monitors connected within the network. The browser-based application provides easy access to the information the user needs. The administrator can conduct or schedule quality control operations from anywhere in the hospital easily and promptly. Inventory information, e.g., the model name and usage time of monitors, can be managed in RadiNET Pro. In addition, information such as the connected computers and graphics boards, the medical facility and the installation location can also be recorded. Along with that, detailed information on each monitor can be consolidated into a report on request.

- ✓ Centralised quality management for monitors in the hospital network
- ✓ Easy-to-use browser-based applications in the facility's network
- ✓ Save time with remote calibration with the aid of monitor's own sensors
- ✓ Unified asset management for monitors, graphics boards and computers
- ✓ Manages five to 8,000 monitors; perfect addition to the RadiCS quality control software
- ✓ Reporting function with information on connected monitors, their usage and results

Features

Quality management for all in-hospital monitors

In hospitals, maintaining control over the quality of a large number of monitors is complex and extremely time-consuming. EIZO offers centralised management of client monitors connected to the hospital network which improves the efficiency of quality control process monitoring.



Centralised monitor management

In hospitals, maintaining control over the quality of a large number of monitors is complex and extremely time-consuming. EIZO offers centralised management of client monitors connected to the hospital network which improves the efficiency of quality control process monitoring.

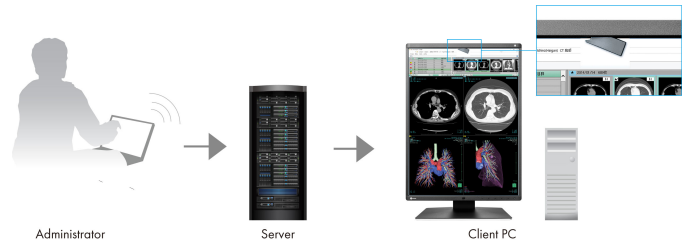
Easy-to-use web-based application

This simple web-based application offers easy access to desired information. The administrator can conduct or schedule quality control operations from anywhere in the hospital easily and promptly. In addition, RadiCS and RadiNET Pro use the same graphical user interface which makes it easy for administrators to operate both programs.

Group	Location	Department	Rooms	Computer	Computer Status	RadiCS	Monitor	Model	Serial No.	Cal. Set.	Usage	Result
A Hospital	MSK RR	Radiology	2E-27	01-iso-body1	Online, Logged on (radiology)	5.0.0.3	E220	505215	03345678	CAL	1718	Passed
A Hospital	Angio RR	Radiology	2E-16	01-iso-body1	Online, Logged on (radiology)	5.0.0.3	E220	505215	03345678	CAL	2412	Passed
A Hospital	Main	Radiology	01-iso-body1	01-iso-body2	Online, Logged on (radiology)	5.0.0.3	E220	505215	03345678	CAL	4794	Passed
A Hospital	Main	Radiology	01-iso-body2	01-iso-body2	Online, Logged on (radiology)	5.0.0.3	E220	505215	03345678	CAL	8521	Passed
A Hospital	Main	Radiology	01-iso-body2	01-iso-body2	Online, Logged on (radiology)	5.0.0.3	E220	505215	03345678	CAL	1990	Failed
A Hospital	Main	Radiology	01-iso-body2	01-iso-body2	Offline	5.0.0.3	E220	505215	03345678	CAL	3768	-
A Hospital	Main	Radiology	01-iso-gen3	01-iso-gen1	Online, Logged on (radiology)	5.0.0.3	E220	505215	03345678	CAL	11122	Passed
A Hospital	Main	Radiology	01-iso-gen1	01-iso-gen1	Online, Logged on (radiology)	5.0.0.3	E220	505215	03345678	CAL	3729	Failed
A Hospital	Main	Radiology	01-iso-gen1	01-iso-gen2	Online, Logged on (radiology)	5.0.0.3	E220	505215	03345678	CAL	2564	Passed
A Hospital	Main	Radiology	01-iso-gen2	01-iso-gen2	Online, Logged on (radiology)	5.0.0.3	E220	505215	03345678	CAL	4684	Passed
A Hospital	Pavilion	CMC	01-iso-gen2	01-iso-gen1	Online, Logged on (radiology)	5.0.0.3	E220	505215	03345678	CAL	1091	-
A Hospital	Pavilion	CMC	01-iso-gen1	01-iso-gen1	Online, Logged on (radiology)	5.0.0.3	E220	505215	03345678	CAL	3935	Passed
A Hospital	MarFlexby/rom	Radiology	Body 3	01-iso-renew1	Online, Logged on (radiology)	5.0.0.3	E220	505215	01234567	CAL	3935	Failed
A Hospital	MarFlexby/rom	Radiology	Body 3	01-iso-renew2	Online, Logged on (radiology)	5.0.0.3	E220	505215	01234567	CAL	3935	Passed
A Hospital	MarFlexby/rom	Radiology	Body 3	01-iso-renew2	Online, Logged on (radiology)	5.0.0.3	E220	505215	01234567	CAL	3935	Passed
A Hospital	MarFlexby/rom	Radiology	Body 3	01-iso-renew2	Online, Logged on (radiology)	5.0.0.3	E220	505215	01234567	CAL	3935	Passed
A Hospital	Reading Room	Radiology	02-iso-body1	02-iso-body1	Online, Logged on (radiology)	5.0.0.3	E220	505215	01234567	CAL	2030	Passed
A Hospital	Reading Room	Radiology	02-iso-body2	02-iso-body2	Online, Logged on (radiology)	5.0.0.3	E220	505215	01234567	CAL	2010	Passed
A Hospital	Reading Room	Radiology	02-iso-body2	02-iso-body2	Online, Logged on (radiology)	5.0.0.3	E220	505215	01234567	CAL	2296	Passed

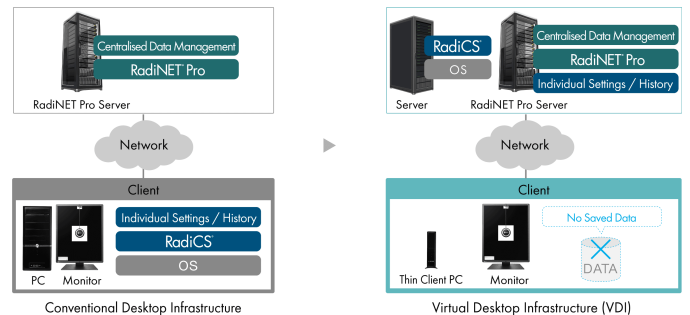
Save time with remote calibration

Quality control tasks such as testing and calibration using the integrated front sensor (IFS) can be performed remotely. This dramatically reduces the time and effort required by users and administrators to calibrate the monitors.



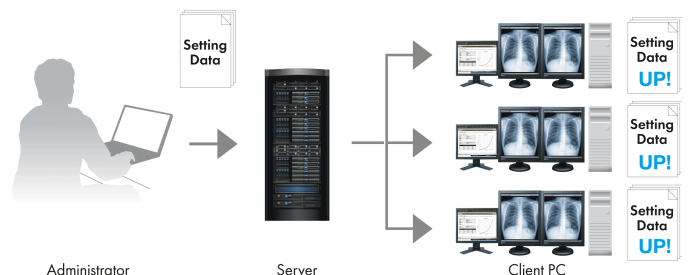
Virtual desktop infrastructure

Virtual desktops are becoming increasingly popular in the medical field in an effort to improve work efficiency, reduce costs and save space. RadiNET Pro makes it possible to centrally manage client monitors from a virtual desktop infrastructure.



Group remote setting

In addition to scheduling monitor adjustment as well as acceptance and constancy tests, a group policy can be configured for the backlight saver and monitor power switch settings based on the respective conditions at each facility. This group policy can be set for each facility or department using an intuitive on-screen wizard.

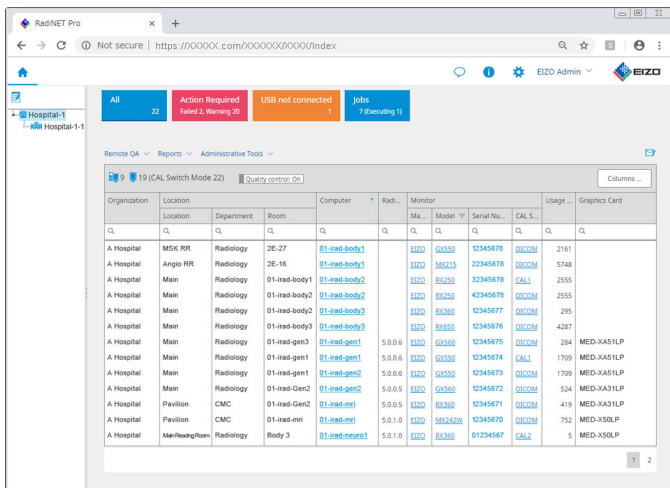


Features

Unified asset management

The asset information, such as the model name and usage time of both RadiForce and FlexScan EV-Series monitors used for displaying patient data, can be displayed using RadiNET Pro. Information such as the connected PC and graphics board, the medical institution and the installation location can also be recorded. The total average usage time can be more effectively managed, for example, by swapping out monitors which have been in use for extended periods with ones that have been in use for a shorter amount of time.

In addition, management rules can be set using the intuitive on-screen wizard to optimise the operation of monitors in different groups and facilities.



Secure group management

The policy settings as well as their consistent application are important in order to effectively make use of a group policy. When installing a new client monitor, it may be necessary to manually install the policy on each new monitor. That's because the configured group policy is installed automatically on new monitors when using RadiNET Pro. This allows monitor management to begin automatically according to a policy chosen in advance.

Manages 8000 monitors

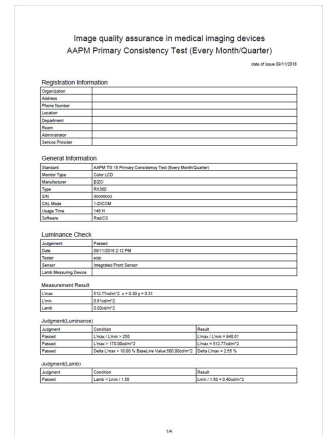
When fully equipped, RadiNET Pro is capable of managing the entire client network with up to 8,000 screens on up to 1,000 workstations – from diagnostic to KIS/RIS monitors.

Warning notifications

If the picture quality of a monitor needs to be checked, an automatic notification is sent to a specified e-mail address.

Reporting function

Detailed information on each screen is summarised in a report. This contains information on the date of commissioning, measurement results from calibration operations as well as acceptance and consistency test data. If document is required, then simply print out the information. In addition, documentation from multiple screens can be generated and printed in a single work step.



Other features

- ✓ Forecasting of monitor replacement
- ✓ Remote upgrading of RadiCS software
- ✓ CSV file export

The perfect addition

The optional EIZO RadiCS quality control software enables comprehensive maintenance and validation of monitors, covering all aspects from calibration and acceptance/consistency testing to archiving.



[Learn more about RadiCS software \(optionally available\)](#)

Specification

Max. number of managed monitors	8,000
Supported languages	German, English, French, Japanese, Chinese
Requirements (administrator PC)	
Supported Web browsers	Windows Internet Explorer 11.0 Google Chrome 68.0 Microsoft Edge 42.1
Min. resolution	1024x768
Server requirements	
Operating systems	Windows Server 2016 Standard Windows Server 2012 R2 Standard Windows 10 (Fall Creators Update/April 2018 Update Pro/Enterprise 64-bit) Windows 10 SP1 (64-bit) Windows 7 SP1 Professional/Enterprise/Ultimate Windows 7 SP1 (64-bit)
Databases	Server 2016 Standard SP1/Express Edition SP1 SQL Server 2014 Standard SP1/Express Edition SP1
Hard drive capacity	150 GB (min.)
RAM	4 GB (min.)
